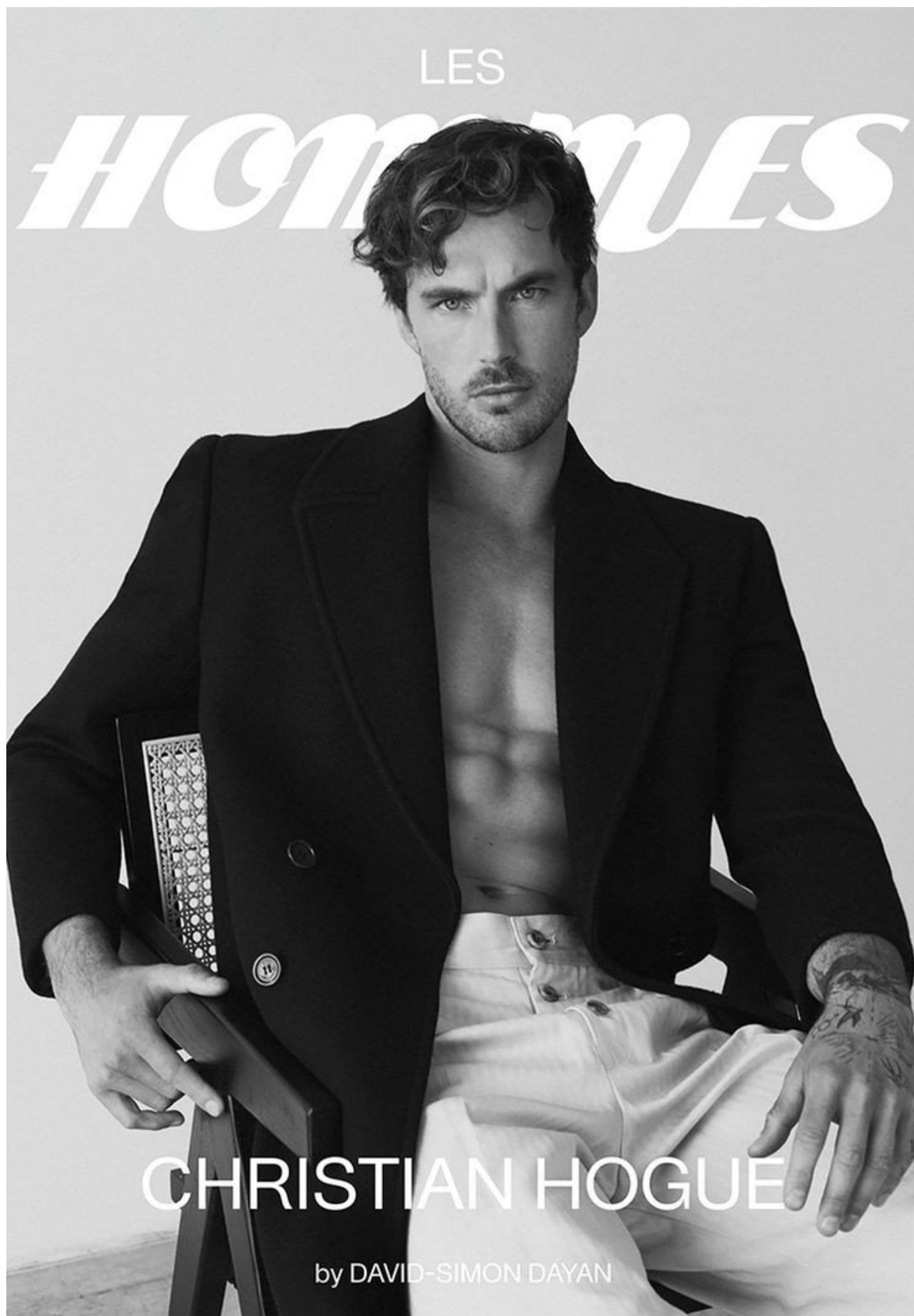


CHRISTIAN HOGUE



CHRISTIAN HOGUE

by DAVID-SIMON DAYAN

HEIGHT 188 CM / 6'2" | CHEST 101 CM / 40" | WAIST 81 / 32 | HIPS 94 CM / 37" | HAIR BROWN | EYES BLUE | SHOES 44 / 10
SUIT 50 / 40 | COLLAR 39 / 15.5

wiener
models
A KULT AGENCY

CHRISTIAN HOGUE



earl MONROWEX J.CREW
ousers LUIS ANTONIO

HEIGHT 188 CM / 6'2" | CHEST 101 CM / 40" | WAIST 81 / 32 | HIPS 94 CM / 37" | HAIR BROWN | EYES BLUE | SHOES 44 / 10
SUIT 50 / 40 | COLLAR 39 / 15.5

wiener
models
A KULT AGENCY

CHRISTIAN HOGUE

Schön!

06 CHINA

winter 2022

christian
hogue

回归自我

now is
the future

现在即未来

0/TS

元/港币60元

174-5140 男装



HEIGHT 188 CM / 6'2" | CHEST 101 CM / 40" | WAIST 81 / 32 | HIPS 94 CM / 37" | HAIR BROWN | EYES BLUE | SHOES 44 / 10

SUIT 50 / 40 | COLLAR 39 / 15.5

wiener
models

A KULT AGENCY

CHRISTIAN HOGUE



Jewelry LE GRAM
Blazer LUIS ANTO

HEIGHT 188 CM / 6'2" | CHEST 101 CM / 40" | WAIST 81 / 32 | HIPS 94 CM / 37" | HAIR BROWN | EYES BLUE | SHOES 44 / 10
SUIT 50 / 40 | COLLAR 39 / 15.5

wiener
models
A KULT AGENCY

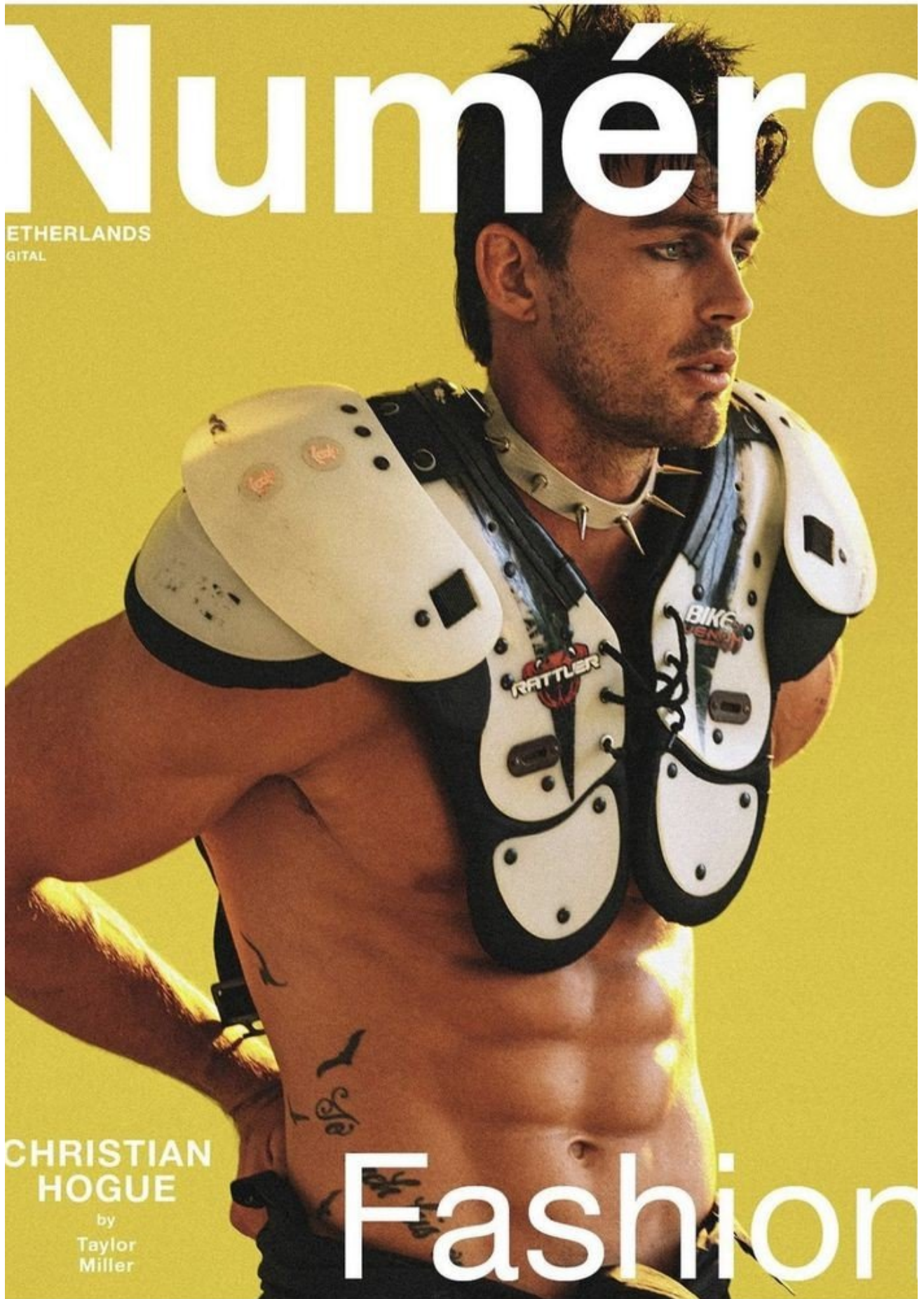
CHRISTIAN HOGUE



HEIGHT 188 CM / 6'2" | CHEST 101 CM/40" | WAIST 81 / 32 | HIPS 94 CM/37" | HAIR BROWN | EYES BLUE | SHOES 44 / 10
SUIT 50 / 40 | COLLAR 39 / 15.5

wiener
models
A KULT AGENCY

CHRISTIAN HOGUE



HEIGHT 188 CM / 6'2" | CHEST 101 CM / 40" | WAIST 81 / 32 | HIPS 94 CM / 37" | HAIR BROWN | EYES BLUE | SHOES 44 / 10
SUIT 50 / 40 | COLLAR 39 / 15.5

wiener
models
A KULT AGENCY

CHRISTIAN HOGUE



HEIGHT 188 CM / 6'2" | CHEST 101 CM / 40" | WAIST 81 / 32 | HIPS 94 CM / 37" | HAIR BROWN | EYES BLUE | SHOES 44 / 10
SUIT 50 / 40 | COLLAR 39 / 15.5

wiener
models
A KULT AGENCY

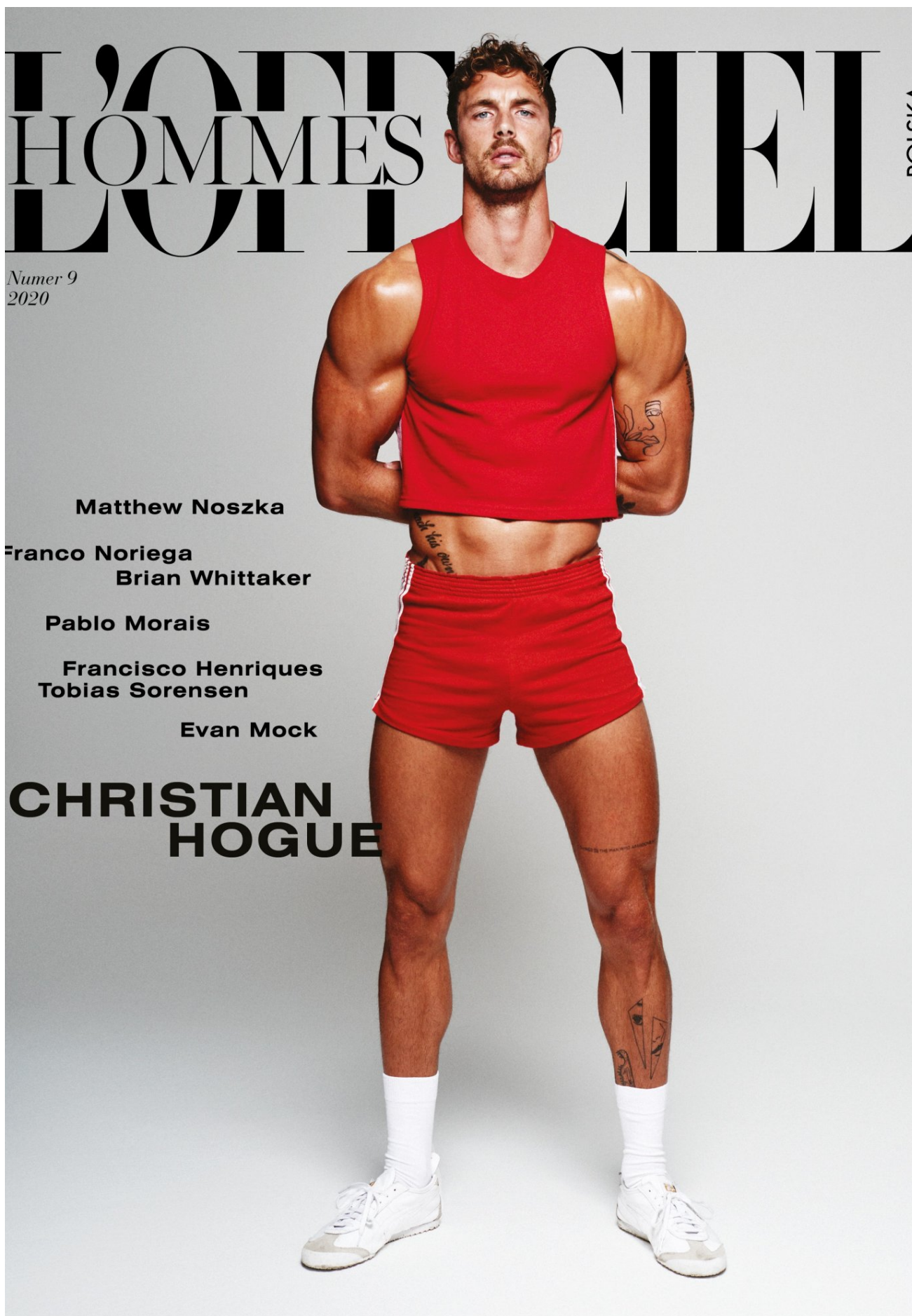
CHRISTIAN HOGUE



HEIGHT 188 CM / 6'2" | CHEST 101 CM / 40" | WAIST 81 / 32 | HIPS 94 CM / 37" | HAIR BROWN | EYES BLUE | SHOES 44 / 10
SUIT 50 / 40 | COLLAR 39 / 15.5

wiener
models
A KULT AGENCY

CHRISTIAN HOGUE



Numer 9
2020

Matthew Noszka

Franco Noriega

Brian Whittaker

Pablo Morais

Francisco Henriques
Tobias Sorensen

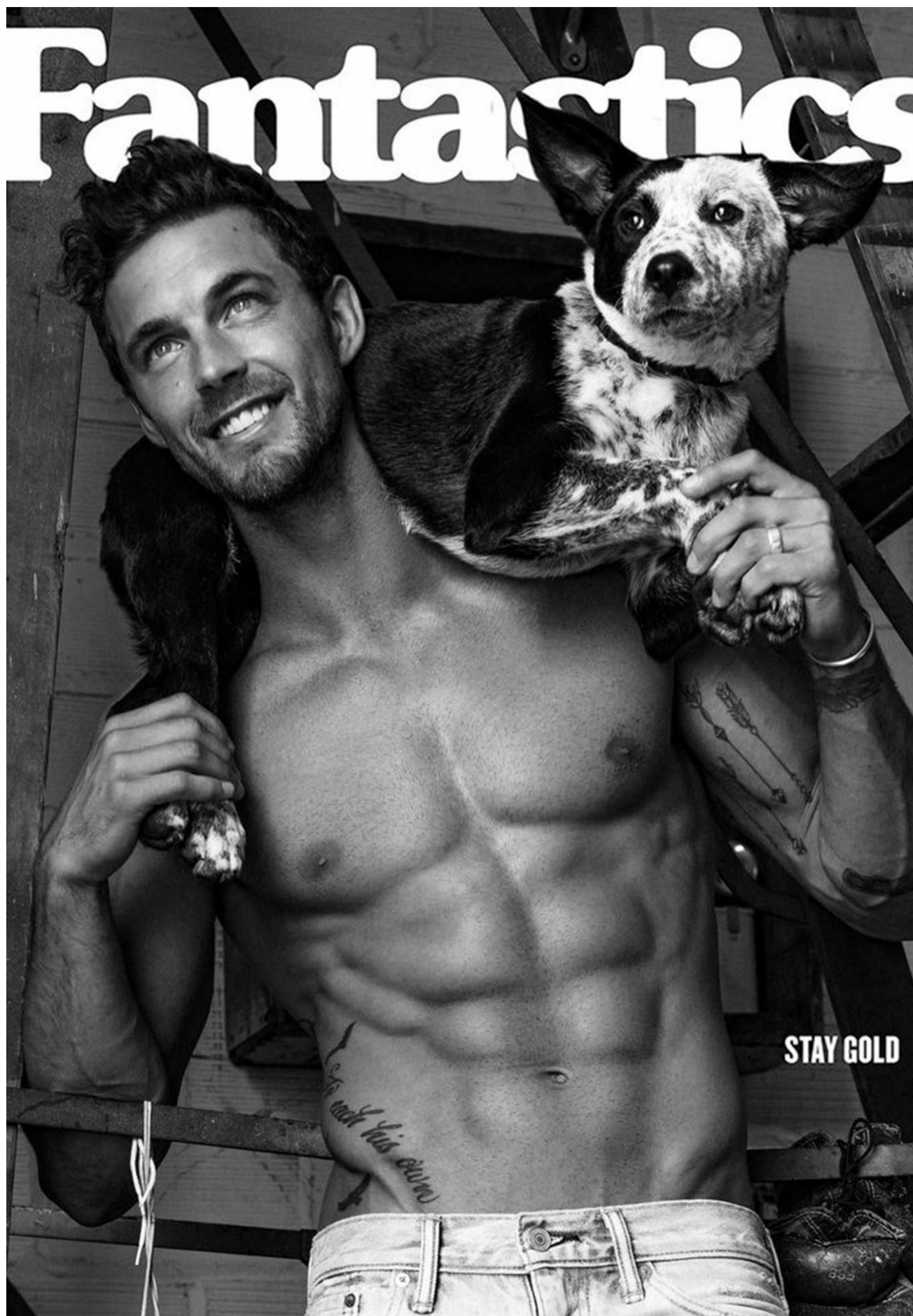
Evan Mock

**CHRISTIAN
HOGUE**

HEIGHT 188 CM / 6'2" | CHEST 101 CM / 40" | WAIST 81 / 32 | HIPS 94 CM / 37" | HAIR BROWN | EYES BLUE | SHOES 44 / 10
SUIT 50 / 40 | COLLAR 39 / 15.5

wiener
models
A KULT AGENCY

CHRISTIAN HOGUE



HEIGHT 188 CM / 6'2" | CHEST 101 CM / 40" | WAIST 81 / 32 | HIPS 94 CM / 37" | HAIR BROWN | EYES BLUE | SHOES 44 / 10
SUIT 50 / 40 | COLLAR 39 / 15.5

wiener
models
A KULT AGENCY

CHRISTIAN HOGUE



HEIGHT 188 CM / 6'2" | CHEST 101 CM / 40" | WAIST 81 / 32 | HIPS 94 CM / 37" | HAIR BROWN | EYES BLUE | SHOES 44 / 10
SUIT 50 / 40 | COLLAR 39 / 15.5

wiener
models
A KULT AGENCY

CHRISTIAN HOGUE



HEIGHT 188 CM / 6'2" | CHEST 101 CM / 40" | WAIST 81 / 32 | HIPS 94 CM / 37" | HAIR BROWN | EYES BLUE | SHOES 44 / 10
SUIT 50 / 40 | COLLAR 39 / 15.5

wiener
models
A KULT AGENCY

CHRISTIAN HOGUE

PERIOD

51

CHRISTIAN
HOGUE

PHOTOGRAPHER **LESTER VILLARAMA** MODEL **CHRISTIAN HOGUE** OF **LA MODELS**
WARDROBE STYLIST **ANESSA LONDON** MUA AND HAIR STYLIST **JOJO RIVERA**

JULY 2018

HEIGHT 188 CM / 6'2" | CHEST 101 CM / 40" | WAIST 81 / 32 | HIPS 94 CM / 37" | HAIR BROWN | EYES BLUE | SHOES 44 / 10
SUIT 50 / 40 | COLLAR 39 / 15.5

wiener
models
A KULT AGENCY

CHRISTIAN HOGUE

ello Cucinelli
豆袖針織上衣
(210美元)。
ello Cucinelli,
皇宮路沙, 853-2877-
。Ermenegildo
印花泳褲 (210
。Ermenegildo
a, 永利皇宮路沙,
2877-6287。
Hermès 小牛皮涼鞋
(55美元)。Hermès,
拉斯維加斯
550-3116;
皇宮路沙,
2877-6029。
x Oyster Perpetual
Dweller 43mm
(11,350美元)。
& Company Watches,
澳門, 853-8986-388;
皇宮路沙,
8889-1380

on short-sleeve
er (\$745) by Brunello
nelli, Brunello
nelli, Wynn Palace
r, 853-2877-6009;
swim shorts (\$210)
menegildo Zegna.
menegildo Zegna, Wynn
e Cotai, 853-2877-
; Calf-skin sandals
(25) by Hermès.
Hermès, Encore Las Vegas,
550-3116; Wynn
e Cotai, 853-2877-
; Oyster Perpetual
Dweller 43mm watch
(350) by Rolex. Wynn &
any Watches, Wynn
u, 853-8986-388;
Wynn Palace Cotai,
8889-1380



Wynn

HEIGHT 188 CM / 6'2" | CHEST 101 CM / 40" | WAIST 81 / 32 | HIPS 94 CM / 37" | HAIR BROWN | EYES BLUE | SHOES 44 / 10
SUIT 50 / 40 | COLLAR 39 / 15.5

wiener
models
A KULT AGENCY

CHRISTIAN HOGUE



HEIGHT 188 CM / 6'2" | CHEST 101 CM / 40" | WAIST 81 / 32 | HIPS 94 CM / 37" | HAIR BROWN | EYES BLUE | SHOES 44 / 10
SUIT 50 / 40 | COLLAR 39 / 15.5

wiener
models
A KULT AGENCY

CHRISTIAN HOGUE



This page: Blazer by **DKNY**.
Jeans by **Rag & Bone**. Shoes by
Rogue. Opposite: Military jacket
by **John Varvatos**. Jeans by
Perry Ellis.

HEIGHT 188 CM / 6'2" | CHEST 101 CM / 40" | WAIST 81 / 32 | HIPS 94 CM / 37" | HAIR BROWN | EYES BLUE | SHOES 44 / 10
SUIT 50 / 40 | COLLAR 39 / 15.5

wiener
models
A KULT AGENCY

CHRISTIAN HOGUE



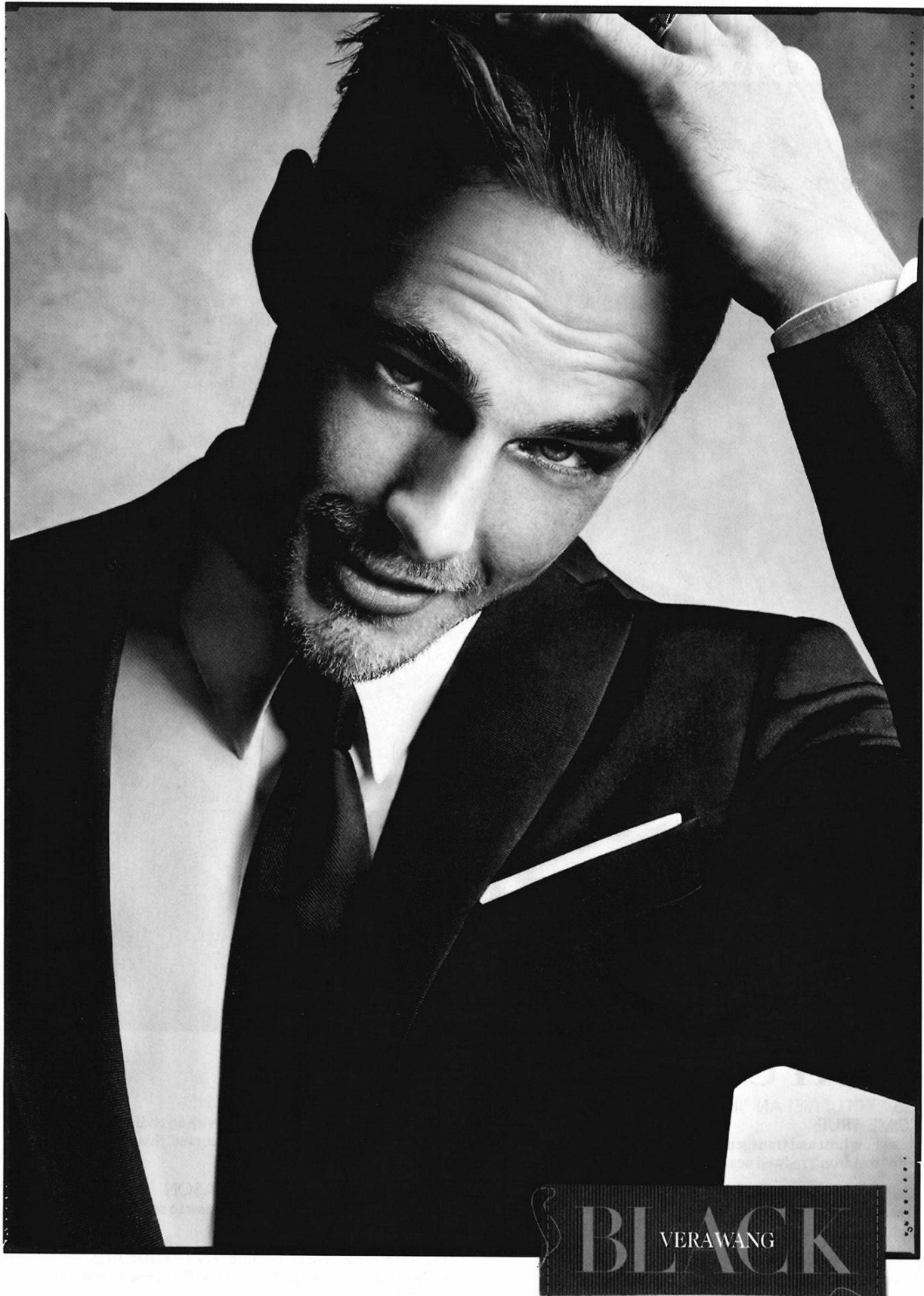
Hermès 棉
襯衫 (87
Hermès, 萬利
702-
永利皇宮路氹,
6029。Gucci
泳衣 (790美元
永利澳門,
5336; 永和
853-2

Cotton po
shirt (\$870) by
Hermès, 8
Vegas, 702-
Wynn Pal
853-2877-66
jersey swims
by Gucci. Gu
Macau, 853-2
Wynn Pal
853-2

HEIGHT 188 CM / 6'2" | CHEST 101 CM / 40" | WAIST 81 / 32 | HIPS 94 CM / 37" | HAIR BROWN | EYES BLUE | SHOES 44 / 10
SUIT 50 / 40 | COLLAR 39 / 15.5

wiener
models
A KULT AGENCY

CHRISTIAN HOGUE



Tuxedo rentals available at Men's Wearhouse & Jos. A. Bank

HEIGHT 188 CM / 6'2" | CHEST 101 CM / 40" | WAIST 81 / 32 | HIPS 94 CM / 37" | HAIR BROWN | EYES BLUE | SHOES 44 / 10
SUIT 50 / 40 | COLLAR 39 / 15.5

wiener
models
A KULT AGENCY